

Vol . 002

August
2024



ARIZONA PTA NEWSLETTER



PRESIDENT'S CORNER

Dear Arizona PTA Family,


As we step into August and a fresh school year, I am filled with optimism and excitement for what lies ahead. This is a time for new beginnings, new connections, and new opportunities to make a lasting impact in our communities. Our PTA's mission has always been to empower every child, and together, we will continue to create positive change for all students across Arizona.

I encourage you to embrace the spirit of collaboration and support as we work together to strengthen our schools. Your involvement, whether big or small, makes a world of difference. Let's uplift each other, celebrate our achievements, and continue to advocate for the success of every child.

A handwritten signature in black ink, appearing to read "Sara Gagliardi".




Sara Gagliardi, Arizona PTA President



2024-2025
TEACHER OF THE MONTH 

Celebrate the amazing Teachers and Staff who go above and beyond at your school! Along with bragging rights, the Arizona PTA Teacher of the Month Award includes a \$100 prize!

Awards are given September - April
Apply at azpta.org/programs-events



TEACHER OF THE MONTH

Starting in September, all Local Units in Good Standing can nominate a Teacher or Staff member who is an activate supporter of the PTA mission.

Only one nomination per Local Unit is accepted each month.



STANDARDS OF AFFILIATION GOOD STANDING

When all of the following documents have been completed/submitted, then your Local Unit is considered in compliance aka in Good Standing with Arizona PTA. Your Local Unit MUST be in Good Standing in order to participate in National PTA Programs like Reflections, to apply for National PTA Grants like the STEM + Families Propelling Our World Grant, and for Arizona PTA Awards like Local Unit of the Year or Teacher of the Month. If you have any questions, please reach out to your Regional Director. Don't know who your Regional Director is? Visit <https://www.azpta.org/regions>

BE IN GOOD STANDING! SUBMIT THIS INFORMATION BY SEPTEMBER 30TH:

- SUBMIT YOUR OFFICER LIST IN GIVEBACKS AND AZPTA.ORG
- STANDARDS OF AFFILIATION FORM ON AZPTA.ORG
- LOCAL UNIT STANDING RULES IN GIVEBACKS
- COPY OF APPROVED BUDGET IN GIVEBACKS
- COMPLETED FINANCIAL REVIEW / AUDIT IN GIVEBACKS
- COPY OF FIRST GENERAL MEMBERSHIP MEETING MINUTES IN GIVEBACKS
- COMPLETE OFFICER TRAINING FOR CORE FOUR OFFICERS
(PRESIDENT, VICE PRESIDENT, SECRETARY, AND TREASURER)

YOUR FIRST GENERAL MEMBERSHIP MEETING SHOULD INCLUDE:

- PRESENTATION & ADOPTION OF THE STANDING RULES
- RATIFICATION OF AZPTA LOCAL UNIT UNIFIED BYLAWS
- PRESENTATION & ADOPTION OF THE BUDGET
- PRESENTATION & ACCEPTING THE FINANCIAL REVIEW / AUDIT

THESE MEETING NOTES ARE PART OF BEING IN GOOD STANDING!

REFLECTIONS

DON'T FORGET TO REGISTER YOUR UNIT FOR REFLECTIONS!

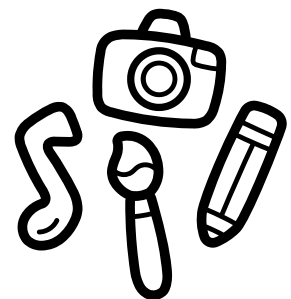
register at pta.org/reflections



FIND USEFUL IMAGES, FORMS AND LINKS TO RUN YOUR PROGRAM AT AZPTA.ORG/REFLECTIONS

This year's Reflections theme is "Accepting Imperfections". There are six categories to enter into:

- Dance Choreography
- Film Production
- Literature
- Music Composition
- Photography
- Visual Arts



Register your Local Unit, find useful images, and get familiar with the deadlines by visiting azpta.org/reflections.



LOCAL UNIT SPOTLIGHT



This summer, the Dysart Special Education PTSA's Accessible Playgrounds Initiative provided three schools with newly designed sensory paths. These paths were tailored to meet the unique needs of each school and were installed at both elementary and middle schools. "We aimed to ensure that each school received something distinct, age-appropriate, and reflective of school spirit," said President Sara Rivera. Sensory paths offer a simple, cost-effective way to enhance recess with activities accessible to all students. They help students regulate their emotions and sensory systems while developing gross motor skills, boosting social interactions, and improving focus. Sensory paths benefit every student!

BOARD OF MANAGERS UPDATE

Have you ever thought about getting more involved in the Arizona PTA? There are a lot of amazing opportunities on committees like:

- Advocacy
- Arts in Education
- Convention
- Diversity
- Family & Community Engagement
- Marketing

For more information please email marketing@azpta.org



The Arizona PTA Board of Managers held our first training meeting of the year. Special thank you to the Town of Gilbert for the use of their conference room in Town Hall, and to Manny Padia from Produce Positivity for the wonderful training!

MEMBERSHIP



Let's Celebrate

LOCAL UNITS WHO HAVE 10+ MEMBERS

- | | |
|-------------------------------|------------------|
| Acacia PTSA (Vail) | Canyon Ridge PTA |
| Skyline Ranch K-8 PTA | North Ranch PTA |
| PHX Mustangs PTSA | Scott Libby PTA |
| Western Peaks PTSA | West Point PTSA |
| Stetson Hills PTSA | Canyon Rim PTA |
| Dreaming Summit PTSA | West Wing PTSA |
| Lakin Prep Academy PTA | Freedom PTA |
| Dysart Special Education PTSA | Henry PTA |



Let's Celebrate

LOCAL UNITS WHO HAVE 50+ MEMBERS

- | | |
|--------------------|----------------------|
| Sabino High PTSA | Norterra Canyon PTSA |
| Senita Valley PTSA | |

LOCAL UNITS WHO HAVE 100+ MEMBERS

- | |
|------------------------------------|
| Copper Ridge PTA |
| Cottonwood Elementary PTSA |
| Desert Willow Elementary PTA |
| Ocotillo Ridge PTA |
| Mountain View School PTA (Waddell) |



CALENDAR REMINDERS

August

- 15th: AIM insurance renewal due
- 20th: Local PTA/PTSA Membership Monthly Reporting
- 21st: Southeast & Northeast Regional Meeting
- 22nd: North Central Maricopa Regional Meeting
- 29th: Northern & Northwestern Regional Meeting

September

- 20th: Local PTA/PTSA Membership Monthly Reporting
- 30th: Local PTA/PTSA Good Standing Docs due**

October

- 20th: Local PTA/PTSA Membership Monthly Reporting



AUGUST 2024

SUN	MON	TUE	WED	THU	FRI	SAT
				1	2	3
4	5	6	7	8	9	10
11	12	13	14	15	16	17
18	19	20	21	22	23	24
25	26	27	28	29	30	31



SEPTEMBER 2024

SUN	MON	TUE	WED	THU	FRI	SAT
1	2	3	4	5	6	7
8	9	10	11	12	13	14
15	16	17	18	19	20	21
22	23	24	25	26	27	28
29	30					